



SHABACH!
EDUCATE • ENGAGE • EMPOWER.
CHRISTIAN ACADEMY

The School of First Baptist Church of Glenarden

**SHABACH! Christian Academy Homeschool | Homeschool Connections
Back to School Edition 2022**

HOMESCHOOL PROGRAM | MRS. ANITA GIBSON | DIRECTOR

Calendar 

AUGUST	
22	CONCURRENT ENROLLMENT AT COMMUNITY COLLEGE BEGINS
SEPTEMBER	
1	6 TH -12 TH ENGLISH, MATH, & WRITING PRE-ASSESSMENT (2PM-4PM) 3600 BRIGHTSEAT RD., LANDOVER, MD
1	ORIENTATION FOR ALL STUDENTS AND PARENTS (4:30PM) 3600 BRIGHTSEAT RD., LANDOVER, MD
5	LABOR DAY (OFFICE CLOSED)
6	FIRST QTR REPORT PERIOD BEGINS
6	FIRST DAY OF CLASSES (ONSITE & AT HOME)
11	CHILDREN'S BUSINESS FAIR (CBF) ON SEPTEMBER 11TH FROM 12:30-3PM – CLICK HERE
26	VIRTUAL SENIOR MEETING (OVERVIEW OF THE YEAR @ 6:30PM)



This Update is dedicated to getting ready for this school year. Here is a link to the calendar on our webpage under the Forms tab. [Calendar](#)



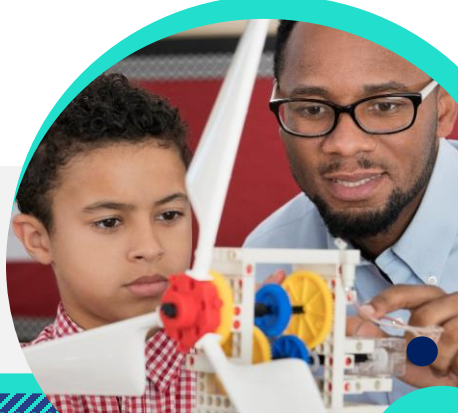
Let's get ready to start an exciting year of learning!! Please take pictures of your student(s) learning at home, attending concurrent enrollment, field trips, events, etc., and send to info@scahomeschool.net. to help our Homeschool community celebrate with you. We look forward to enjoying your students' experiences!

COMMUNITY CONNECTION OPPORTUNITIES

This year we plan to offer more field trips, events, and free clubs to students, so they have opportunities to connect with other students. **Please note, to open our Community Connection links you must have an active Gmail account.**

STUDENT CODE OF CONDUCT

Use the link to access the [Student Code of Conduct](#). Please review the document with your student(s) and complete and submit the form by August 31, 2022.



Student Workspace

Creating a homeschool environment conducive to learning at home is invaluable. We realize that square footage is at a premium, since some households have multiple people requiring space. From children being homeschooled to parents who may be working from home to the many other uses our homes provide, we still think it best to create a small space, at minimum, for your student to use. A place where students have access to a table or desk and a place to store curriculum, notebooks, supplies, etc. It limits distractions for your students. It will also assist your student with concentrating on their assignments and establish order, thus helping with developing their organizational skills.

Student Technology Requirements

Each student should have available to them a device, preferably a laptop or desktop, to complete their online assignments. They will also need the following: a printer, copy paper, and ink in their home workspace.

Uniforms

Here is the information for ordering SHABACH! uniform shirts. All students should have 1-2 shirts for attending onsite classes, events, clubs, chapel, field trips, etc. Jeans with no holes are acceptable bottoms.

All American Wear School Uniforms
5001 – B Forbes Blvd
Lanham, MD 20706
301-459-5000



CrewsPortation
Student Carpool
(301) 642-2691
CrewsPortation@gmail.com

Safe & Reliable!
Group Rates,
Weekend &
Emergency Transpo
Sanitized Vehicle &
Masked Driver

Ride Rates \$25/trip
*One Way
(\$40/roundtrip)
Registration Fee
\$75/child
Restrictions Apply

Serving Ages
5-18 years

*My Vehicle is Registered & Fully Insured

Middle & High School Pre-Assessment



English, math and writing assessments will be given on September 1st at 2-4pm onsite at 3600 Brightseat Road, Landover, MD. Please sign up using the [Assessment Form](#) link, if your student is enrolled in our program in middle or high school and is NOT concurrently enrolled at community college. It's required. Your student should wear a mask. If you are not available to attend use the ["unavailable to attend" form](#) by Friday, August 26, 2022.

IMPORTANT NOTICE: Students observed struggling with the onsite course content after 3 weeks, will be advised to hire a private tutor for their student moving forward. We do not want to hinder the success of any student, so, you also may be asked to withdraw your student from the class to pursue a more individualized plan. Parents will be notified via email and/or a phone call by the teacher.

Tuition Questions

Please always send tuition questions to <mailto:kgreebfield@smionline.org> and copy amgibson@smionline.org. ALL other emails, documents, etc. should always go to <mailto:info@scahomeschool.net>.



Website:
<https://www.scahomeschool.net>



Contact #:
301-583-5333



Email:
info@scahomeschool.net



TENTATIVE ON-SITE GROUP CLASS SCHEDULE 2022-2023

FBCG MINISTRY CENTER
3600 Brightseat Road | Landover, MD 20785



	MONDAY	TUESDAY	WEDNESDAY	THURSDAY
9:00am	English/SH Study Hall/JW	Geometry/EA Physical science Study hall	English/SH Study Hall/JW	Bible/BA Study Hall/JW
10:00am	Adv. English/ SH Study Hall	Algebra I/EA Study Hall/JW	Adv. English/SH Study Hall	Algebra I/EA Study Hall/JW
11:00am	Study Skills Group/ JW American History/DR	Study Hall/JW Chemistry	History Study Groups/JW Study Hall/JW	World History/ Study Hall/JW
12:30pm	Lunch	Lunch	Lunch	Lunch
1:00pm	Science Group/ JW	Study Skills/AG Career Planning/ AG	Financial Literacy	Geometry/EA
2:30pm	Board Van	Board Van	Board Van	Board Van
3:00pm	Practice	Practice	Practice	Practice`